

"NASTY MAGNUS"

11 4 (A) 12
Trombone 1 | Q. Jones

(B) PND 12 (C) TR 12

(D) 3 3

3 UNIS.

(E)

(E) continuation

(F) *f*

(F) continuation

Handwritten musical notation on a single staff. It features a sequence of chords with accents (^) above them. The chords are: F#m, F#m, G#m, F#m, G#m, F#m, G#m, and finally a melodic line with a natural sign (^) above the first note. The word "unns." is written above the final notes.

Handwritten musical notation on a single staff, labeled with a circled 'G'. It contains a melodic line with various notes and rests.

Handwritten musical notation on a single staff, continuing the melodic line from the previous staff. It includes several chords with accents (^) above them.

Handwritten musical notation on a single staff, labeled with a circled 'H'. It shows a melodic line with a long slur over the first two notes and a final chord marked with the number '10' above it.

Handwritten musical notation on a single staff, labeled with a circled 'I'. It features a series of chords: F#m, G#m, F#m, and G#m, with the number '2' written above the final chord.

Handwritten musical notation on a single staff, continuing the chord sequence from the previous staff. It shows F#m, G#m, F#m, and G#m.

Handwritten musical notation on a single staff, starting with a triplet of chords marked with the number '3' above them, followed by a melodic line.

Handwritten musical notation on a single staff, labeled with circled 'J1' and 'J2'. Above J1 is the text '8x's' and above J2 is '6x's'. The staff contains a complex melodic line with many notes and slurs.

Handwritten musical notation on a single staff, labeled with a circled 'J3'. It features a melodic line with several chords, including one marked with '(b)' above it.

Handwritten musical notation on a single staff, labeled with a circled 'K'. It starts with a chord marked with the number '5' above it, followed by a melodic line and several chords.

Handwritten musical notation on a single staff. It begins with a treble clef and a key signature of one flat. The notation includes quarter notes, eighth notes, and rests, with some notes marked with accents and slurs.

(L)

Handwritten musical notation on a single staff, marked with a circled 'L'. It consists of several measures containing rests and a few notes with accents.

Handwritten musical notation on a single staff, featuring notes with flats and accents.

Handwritten musical notation on a single staff, showing chords and notes with accents.

(M)

Handwritten musical notation on a single staff, marked with a circled 'M'. It features triplets and chords with flats and accents.

(N)

Handwritten musical notation on a single staff, marked with a circled 'N'. It features triplets and chords with flats and accents.

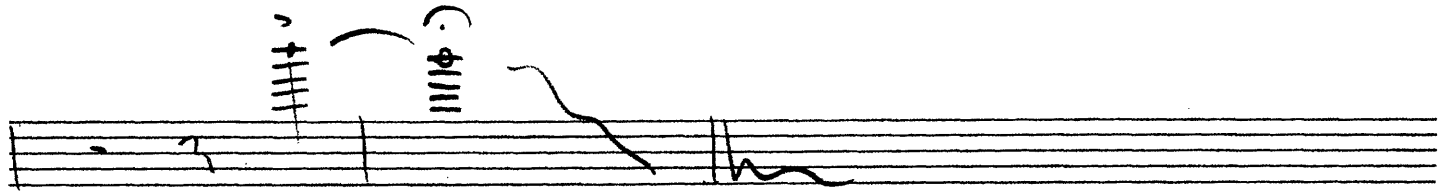
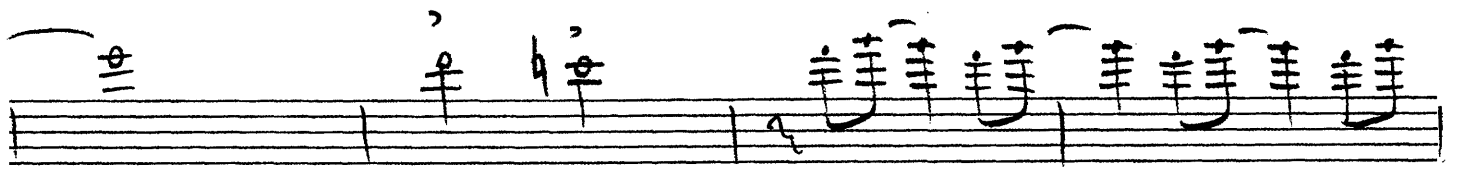
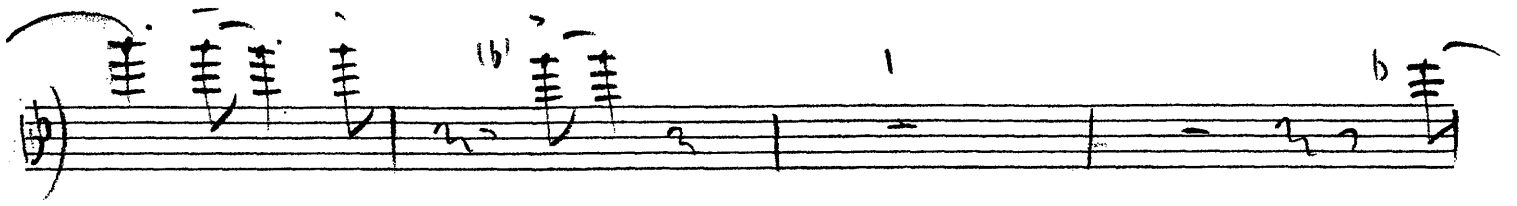
(O)

Handwritten musical notation on a single staff, marked with a circled 'O'. It features chords and notes with accents.

Handwritten musical notation on a single staff, featuring chords and notes with flats and accents.

(P)

Handwritten musical notation on a single staff, marked with a circled 'P'. It features chords and notes with accents.



NASTY MAGNUS

♩ 1 4 (A) BS 12
Trombone 2 | Q. Jones

(B) PNO 12 (C) TR. 12

(D) 3 3

3

(E)

fp

(F) *fp*

fp

Handwritten musical notation on a single staff. It begins with a treble clef and a key signature of one flat. The melody consists of eighth and quarter notes with various accents (^) and a flat (b) over a note. The piece concludes with a double bar line.

Handwritten musical notation on a single staff, labeled with a circled 'G'. It features a treble clef and a key signature of one flat. The melody is composed of eighth and quarter notes with accents (^) and a flat (b). It ends with a double bar line.

Handwritten musical notation on a single staff. It continues the melody from the previous staff with eighth and quarter notes, including accents (^) and a flat (b). The staff ends with a double bar line.

Handwritten musical notation on a single staff, labeled with a circled 'H'. It shows a treble clef and a key signature of one flat. The notation includes a dynamic marking of **fff** and a fermata over a chord. A circled '10' is written above the staff. The staff ends with a double bar line.

Handwritten musical notation on a single staff, labeled with a circled 'I'. It features a treble clef and a key signature of one flat. The notation includes a dynamic marking of **p** and a circled '2' above the staff. The staff ends with a double bar line.

Handwritten musical notation on a single staff. It continues the melody with eighth and quarter notes, including a dynamic marking of **p** and a circled '1' above the staff. The staff ends with a double bar line.

Handwritten musical notation on a single staff. It features a treble clef and a key signature of one flat. The notation includes a circled '3' above the staff. The staff ends with a double bar line.

Handwritten musical notation on a single staff, labeled with a circled 'J1'. It features a treble clef and a key signature of one flat. The notation includes circled annotations '8x's' and '6x's' above the staff. The staff ends with a double bar line.

Handwritten musical notation on a single staff, labeled with a circled 'J3'. It features a treble clef and a key signature of one flat. The notation includes a circled '1' above the staff. The staff ends with a double bar line.

Handwritten musical notation on a single staff, labeled with a circled 'K'. It features a treble clef and a key signature of one flat. The notation includes a circled '5' above the staff. The staff ends with a double bar line.

Handwritten musical notation on a single staff, featuring a treble clef and a key signature of one flat. The notation includes a series of notes and rests, with some notes beamed together and others marked with accents.

(L)

Handwritten musical notation on a single staff, starting with a circled letter 'L'. The notation includes notes with accents and a flat symbol.

Handwritten musical notation on a single staff, featuring notes with accents and rests.

Handwritten musical notation on a single staff, featuring notes with accents and rests.

(M)

Handwritten musical notation on a single staff, starting with a circled letter 'M'. The notation includes triplets of notes with accents.

(N)

Handwritten musical notation on a single staff, starting with a circled letter 'N'. The notation includes triplets of notes with accents.

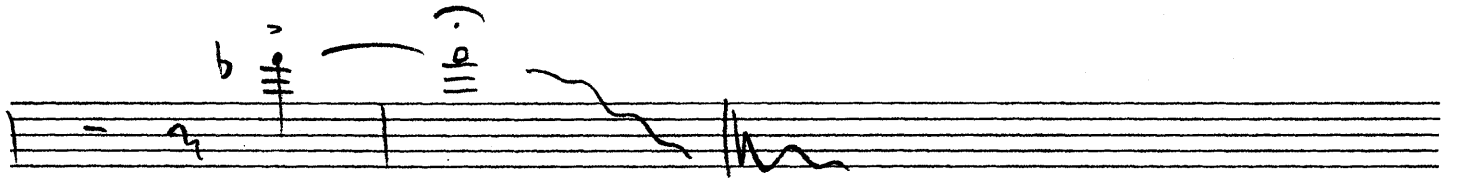
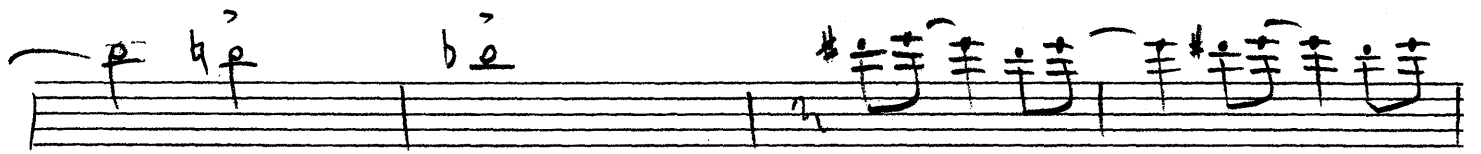
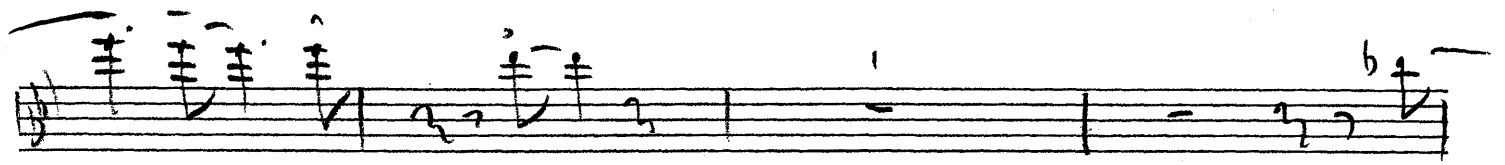
(O)

Handwritten musical notation on a single staff, starting with a circled letter 'O'. The notation includes notes with accents and rests.

Handwritten musical notation on a single staff, featuring notes with accents and rests.

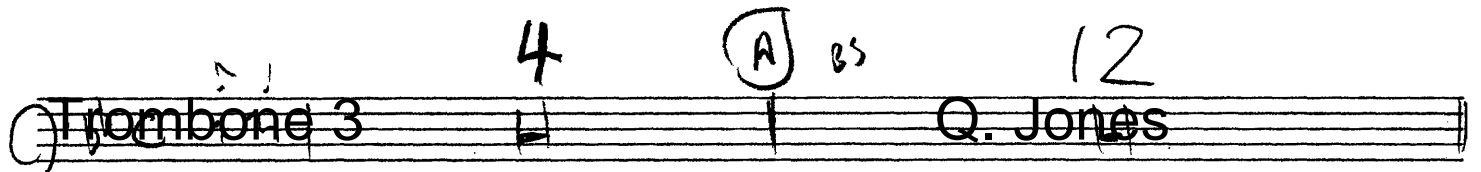
(P)

Handwritten musical notation on a single staff, starting with a circled letter 'P'. The notation includes notes with accents and rests.



NASTY MAGNUS

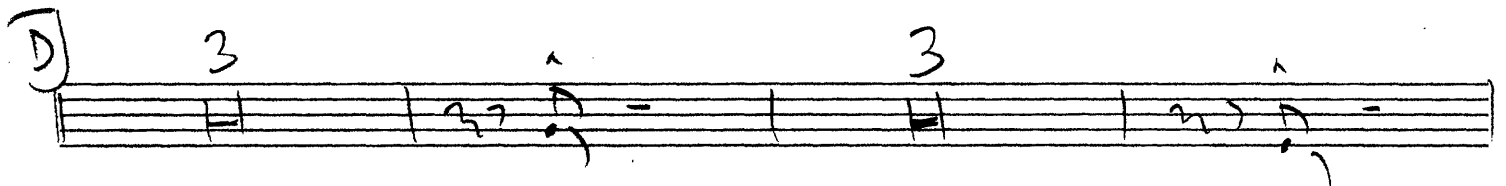
(A) Trombone 3 4 (A) BS 12 Q. Jones



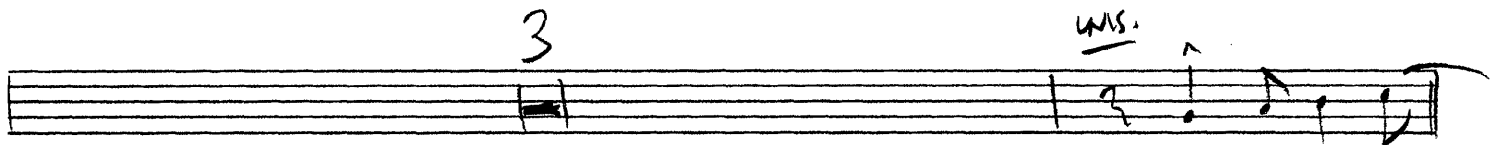
(B) PNO 12 (C) TPE 12



(D) 3 3



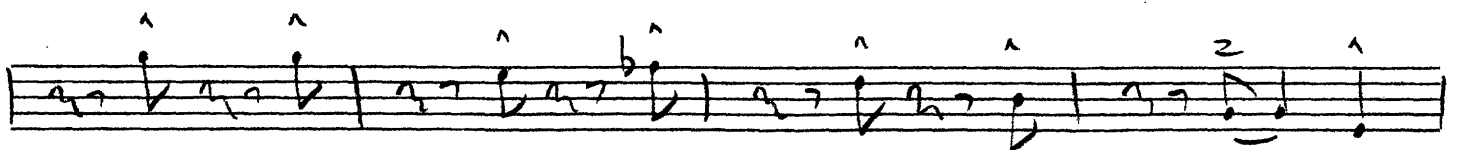
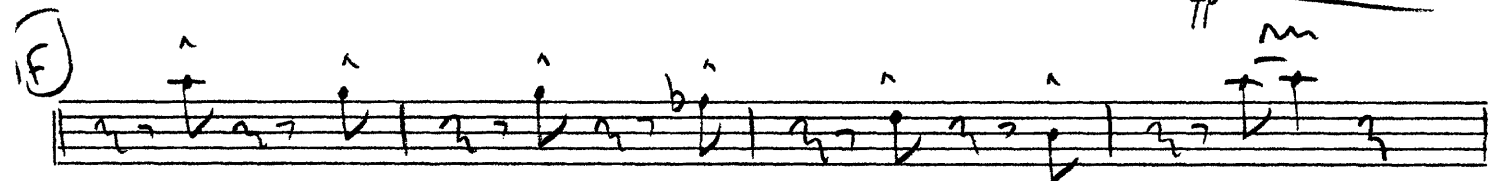
3 ms.



(E)



(F) *fp*



Handwritten musical notation on a single staff. It features a sequence of eighth and quarter notes with various accents (^) and slurs. The notation is in a treble clef.

(G)

Handwritten musical notation on a single staff, labeled (G). It contains a series of notes with slurs and accents, continuing the melodic line.

Handwritten musical notation on a single staff, continuing from the previous section. It includes a flat symbol (b) and various accents (^) over the notes.

(H)

Handwritten musical notation on a single staff, labeled (H). It features a dynamic marking of *fff* and a fermata over a note. The number 10 is written at the end of the staff.

(I)

Handwritten musical notation on a single staff, labeled (I). It includes a dynamic marking of *fff* and a fermata over a note. The number 2 is written at the end of the staff.

Handwritten musical notation on a single staff, continuing the piece. It features a fermata and a slur over a group of notes.

3

Handwritten musical notation on a single staff, labeled with the number 3. It includes a fermata and a slur over a group of notes.

(J1) (8x's) (J2) (6x's)

Handwritten musical notation on a single staff, labeled (J1) and (J2). The labels (8x's) and (6x's) are circled. The notation includes slurs and accents over the notes.

(J3)

Handwritten musical notation on a single staff, labeled (J3). It features slurs and accents over the notes.

(K) 5

Handwritten musical notation on a single staff, labeled (K). It includes a dynamic marking of 5 and a fermata over a note. The number 1 is written at the end of the staff.

Handwritten musical notation on a single staff, featuring a treble clef, a key signature of one flat, and a series of notes with various ornaments and slurs.

(L)

Handwritten musical notation on a single staff, showing a series of notes with accents and slurs.

Handwritten musical notation on a single staff, featuring notes with accents and a flat sign.

Handwritten musical notation on a single staff, showing notes with accents and slurs.

(M)

Handwritten musical notation on a single staff, featuring notes with accents, slurs, and a "3" above the staff.

(N)

Handwritten musical notation on a single staff, showing notes with accents, slurs, and a "3" above the staff.

(O)

Handwritten musical notation on a single staff, featuring notes with accents, slurs, and a "2" above the staff.

Handwritten musical notation on a single staff, showing notes with accents, slurs, and a "2" above the staff.

(P)

Handwritten musical notation on a single staff, featuring notes with accents, slurs, and a "2" above the staff.

NASTY MAGNUS

(A) BS 12
Trombone 4 Q. Jones

(B) RD 12 (C) TRPT 12

(D) 3 3

3 CRIS

(E)

fp

(F) m

Handwritten musical notation on a single staff. It features a series of eighth and sixteenth notes with various accents (^) and slurs. The notation is in a single system.

(G)

Handwritten musical notation on a single staff, labeled (G). It contains several measures of music with slurs and accents.

Handwritten musical notation on a single staff, continuing from the previous system. It includes slurs and accents over the notes.

(H)

Handwritten musical notation on a single staff, labeled (H). It shows a fermata over a note, followed by a rest, and then a dynamic marking *fff*. The number 10 is written above the staff.

(I)

Handwritten musical notation on a single staff, labeled (I). It features a dynamic marking *p* and the number 2 written above the staff.

Handwritten musical notation on a single staff, continuing from the previous system. It includes a fermata and the number 1 written above the staff.

Handwritten musical notation on a single staff, continuing from the previous system. It includes a fermata and the number 3 written above the staff.

(J1) 8xs

Handwritten musical notation on a single staff, labeled (J1) with "8xs" circled. It features a double bar line and a circled label (J2) with "6xs" circled.

(J3)

Handwritten musical notation on a single staff, labeled (J3). It contains several measures of music with slurs and accents.

(K)

Handwritten musical notation on a single staff, labeled (K). It features a fermata and the number 5 written above the staff.

Handwritten musical notation on a single staff. It begins with a treble clef and a key signature of one flat. The notation includes quarter notes, eighth notes, and rests, with some notes marked with accents (^).

(L)

Handwritten musical notation on a single staff, starting with a circled 'L'. It contains notes with accents (^) and rests.

Handwritten musical notation on a single staff, featuring notes with accents (^) and a flat symbol (b).

Handwritten musical notation on a single staff, featuring notes with accents (^) and a flat symbol (b).

(M)

Handwritten musical notation on a single staff, starting with a circled 'M'. It features triplet markings (3) over groups of notes.

(N)

Handwritten musical notation on a single staff, starting with a circled 'N'. It features a triplet marking (3) and a quarter note (4).

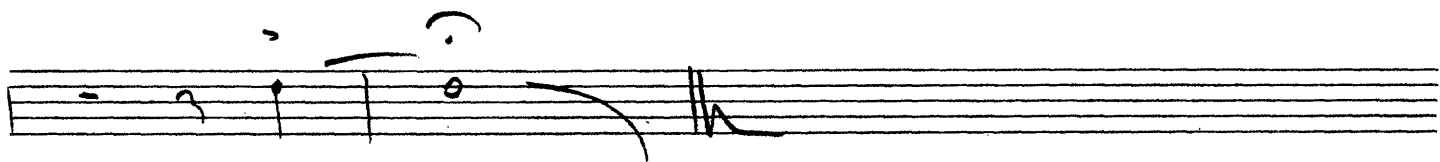
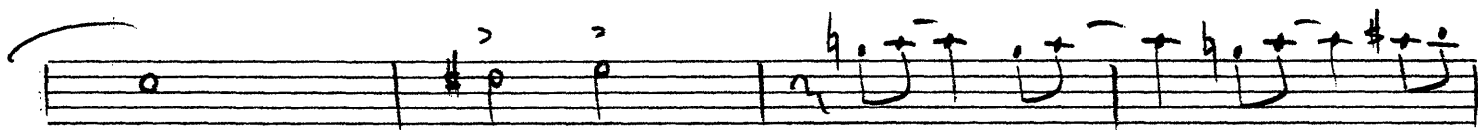
(O)

Handwritten musical notation on a single staff, starting with a circled 'O'. It features notes with accents (^) and rests.

Handwritten musical notation on a single staff, featuring notes with accents (^) and flat symbols (b).

(P)

Handwritten musical notation on a single staff, starting with a circled 'P'. It features notes with accents (^) and rests.



NASTY MAGNUS

♩ = 120
PIANO

"March Tempo"

Drums!

4

A B^s

12

Basic Style Q. Jones

B) Solo

F B^b B⁰ B C^m

F# Bbm

C 8va TR

Handwritten musical notation for the first system, featuring a treble clef, a key signature of two flats, and a common time signature. The staff contains four measures with notes and rests. Chord symbols $Bb7$ and Suu are written below the staff.

LoCo

Handwritten musical notation for the second system, featuring a bass clef and a key signature of two flats. The staff contains four measures with notes and rests. Chord symbols $Eb9$, $Bb7$, and $G7(b9)$ are written below the staff.

8va

Su

Em

Handwritten musical notation for the third system, featuring a treble clef and a key signature of two flats. The staff contains four measures with notes and rests. Chord symbols $Cm7$, $F7$, and $Bb6$ are written below the staff.

D E Bb7

Eb6

Bb7

Handwritten musical notation for the fourth system, featuring a bass clef and a key signature of two flats. The staff contains four measures with notes and rests.

Eb6

Eo

Bb7

G7(b9)

Handwritten musical notation for the fifth system, featuring a bass clef and a key signature of two flats. The staff contains four measures with notes and rests.

Cm7

F7

Bb7

Handwritten musical notation for the sixth system, featuring a bass clef and a key signature of two flats. The staff contains four measures with notes and rests.

E G

8

Handwritten musical notation for the seventh system, featuring a bass clef and a key signature of two flats. The staff contains one measure with a whole note chord and a double bar line.

H Tenor 3 Comp. Bb7

Handwritten musical notation for section H, featuring three staves with notes and accidentals. Labels include Eb6, E0, Bb6, Bb6, G7, Cm7, F7, Bb7, Cm7, F7.

I Bb (Tenor + Trubs) 1 Bb6 Bb7

Handwritten musical notation for section I, featuring three staves with notes and accidentals. Labels include Eb6, Bb6, Bb7, Dm7, G7, Cm7, F7, Bb7, Cm7, Bb7.

J1 8x's 2 **J2** Tpts. 6x's 2

Handwritten musical notation for section J, featuring a single staff with notes and accidentals. Labels include 8x's, 2, Tpts., 6x's, 2.

J3 3 B.O. | Solo (BASS CLEF)

Handwritten musical notation for section J3, featuring a single staff with notes and accidentals. Labels include 3, B.O. | Solo, (BASS CLEF).

K CSL BASS 2 **L** SA X 2 W Harmon

Handwritten musical notation for section K, featuring a single staff with notes and accidentals. Labels include CSL BASS, 2, SA X, 2, W Harmon.

M Saxes (p-cresc f) 8

Handwritten musical notation for section M, featuring a single staff with notes and accidentals. Labels include Saxes (p-cresc f), 8.

Handwritten musical notation on a five-line staff. It begins with a circled 'N' and a treble clef. The first measure contains a whole note with a sharp sign and a '2' superscript. The second measure contains a whole note with a sharp sign. The third measure contains a whole note with a circled '0'. The fourth measure contains a whole note with a sharp sign. The staff ends with a double bar line.

Handwritten musical notation on a five-line staff. It begins with a circled 'P' and a treble clef. The first measure contains a whole note with a sharp sign and a '6' below it. The second measure contains a whole note with a sharp sign, a '12' above it, and 'Sxs. Bk.' below it. The third measure contains a whole note with a sharp sign and a '6' below it. The fourth measure contains a whole note with a sharp sign, a circled 'Solo!' above it, and a 'f' below it. The fifth measure contains a whole note with a sharp sign. The staff ends with a double bar line.

NASTY MAGNUS

GUITAR

Note musical pattern!

Musical staff with treble clef, C time signature, and notes. Includes the text "Q. Jones".

(A) BS

Musical staff with notes and "x" marks. Fingering numbers 2, 4, 6, 8, 10, 12 are written above.

(B) PNO

Musical staff with notes and "x" marks. Fingering numbers 2, 4, 6, 8, 10, 12 are written above.

(C) TR

Musical staff with notes and "x" marks. Fingering numbers 2, 4, 6, 8, 10, 12 are written above.

(D) SXS

Musical staff with notes and "x" marks. Fingering numbers 2, 4, 6, 8, 10, 12 are written above.

(E) BRASS

Musical staff with notes and "x" marks. Fingering numbers 2, 4, 6, 8 are written above.

(F)

Musical staff with notes and "x" marks. Fingering numbers 2, 4, 6, 8, 10, 12 are written above.

(G)

Musical staff with notes and "x" marks. Fingering numbers 2, 4, 6 are written above.

(H) TEN

Handwritten musical notation for Tenor saxophone part (H). The staff shows a sequence of notes and rests. Above the staff, measures 2, 4, 6, 8, 10, and 12 are marked with circled numbers. The notes are primarily eighth and quarter notes.

(I) BKGD

Handwritten musical notation for Background part (I). The staff shows a sequence of notes and rests. Above the staff, measures 2, 4, 6, 8, 10, and 12 are marked with circled numbers. The notes are primarily eighth and quarter notes.

(J1) 8x's + sax

(J2) 6x's + sax

(J3)

Handwritten musical notation for saxophone parts (J1, J2, J3). The staff shows a sequence of notes and rests. Above the staff, measures 2, 4, 6, 8, 10, and 12 are marked with circled numbers. The notes are primarily eighth and quarter notes.

(K) SAX SOLO

Handwritten musical notation for Sax Solo part (K). The staff shows a sequence of notes and rests. Above the staff, measures 2, 4, 6, 8, 10, and 12 are marked with circled numbers. The notes are primarily eighth and quarter notes.

(L)

Handwritten musical notation for part (L). The staff shows a sequence of notes and rests. Above the staff, measures 2, 4, 6, 8, 10, and 12 are marked with circled numbers. The notes are primarily eighth and quarter notes.

(M)

Handwritten musical notation for part (M). The staff shows a sequence of notes and rests. Above the staff, measures 2, 4, 6, and 8 are marked with circled numbers. The notes are primarily eighth and quarter notes.

(N)

Handwritten musical notation for part (N). The staff shows a sequence of notes and rests. Above the staff, measures 2, 4, 6, and 8 are marked with circled numbers. The notes are primarily eighth and quarter notes.

(O) + TRASS

Handwritten musical notation for part (O). The staff shows a sequence of notes and rests. Above the staff, measures 2, 4, 6, and 8 are marked with circled numbers. The notes are primarily eighth and quarter notes.

(P)

Handwritten musical notation for part (P). The staff shows a sequence of notes and rests. Above the staff, measure 2 is marked with a circled number. The notes are primarily eighth and quarter notes.

Handwritten musical notation for part (P) continuation. The staff shows a sequence of notes and rests. Above the staff, measure 2 is marked with a circled number. The notes are primarily eighth and quarter notes.

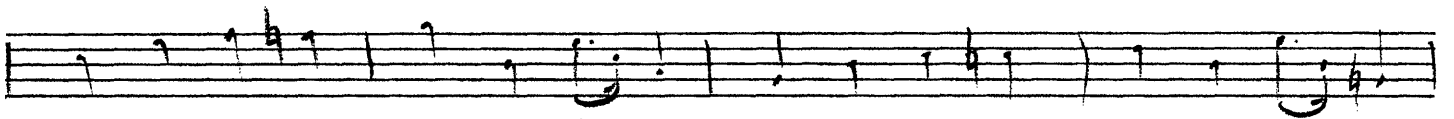
NASTY MAGNUS

$\text{♩} = 120$
BASS

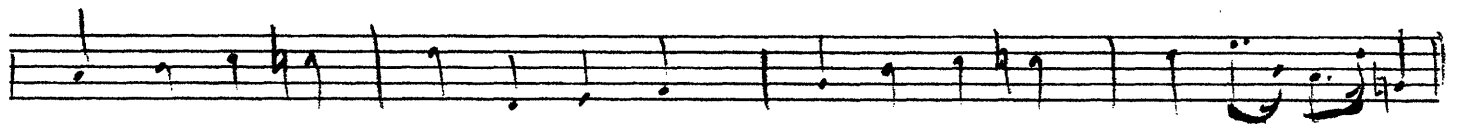
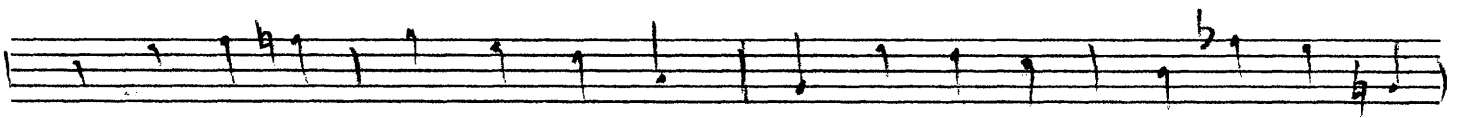
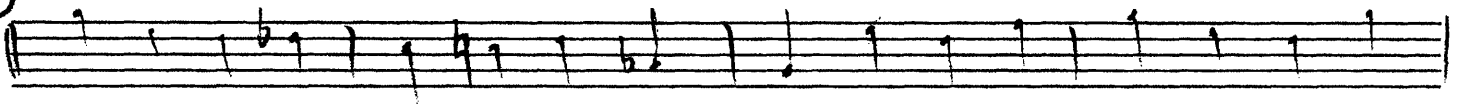
4

Q. Jones

(A) Solo WALK

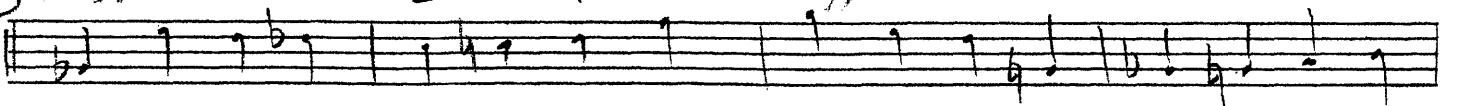


(B) PNO



(C)

B_7 E_b^6 F_7 B_7 B_b^7



Handwritten musical notation on a single staff. Chords written above the staff are Eb, Bb7, Dm7-5, and G7(b9). The notation includes various note values and accidentals.

Handwritten musical notation on a single staff. Chords written above the staff are Cm7, F7, Bbb, Eb, and F7. The notation includes various note values and accidentals.

Handwritten musical notation on a single staff, labeled with a circled 'D'. The notation includes various note values and accidentals.

Handwritten musical notation on a single staff. The notation includes various note values and accidentals.

Handwritten musical notation on a single staff, labeled with a circled 'E'. The notation includes various note values and accidentals.

Handwritten musical notation on a single staff. The notation includes various note values and accidentals.

Handwritten musical notation on a single staff, labeled with a circled 'F'. The notation includes various note values and accidentals.

Handwritten musical notation on a single staff. The notation includes various note values and accidentals.

Handwritten musical notation on a single staff, labeled with a circled 'G'. The notation includes various note values and accidentals.

Handwritten musical notation on a single staff. The notation includes various note values and accidentals.

(H)

Handwritten musical notation for section H, first staff. The staff contains a sequence of notes, including a half note, followed by several quarter notes, and ending with a quarter note and a double bar line.

Handwritten musical notation for section H, second staff. The staff contains a sequence of notes, including a half note, followed by several quarter notes, and ending with a quarter note and a double bar line.

(I)

Handwritten musical notation for section I, first staff. The staff contains a sequence of notes, including a half note, followed by several quarter notes, and ending with a quarter note and a double bar line.

Handwritten musical notation for section I, second staff. The staff contains a sequence of notes, including a half note, followed by several quarter notes, and ending with a quarter note and a double bar line.

(J1) 8x's (J2) 6x's

Handwritten musical notation for section J1 and J2, first staff. The staff contains a sequence of notes, including a half note, followed by several quarter notes, and ending with a quarter note and a double bar line. There are handwritten annotations: "8x's" in a circle above the first few notes, and "J2" in a circle above a group of notes, with "6x's" in a circle to its right.

(J3)

Handwritten musical notation for section J3, first staff. The staff contains a sequence of notes, including a half note, followed by several quarter notes, and ending with a quarter note and a double bar line.

(K) SAXES

Handwritten musical notation for section K, first staff. The staff contains a sequence of notes, including a half note, followed by several quarter notes, and ending with a quarter note and a double bar line. The annotation "SAXES" is written above the staff.

Handwritten musical notation for section K, second staff. The staff contains a sequence of notes, including a half note, followed by several quarter notes, and ending with a quarter note and a double bar line.

(L)

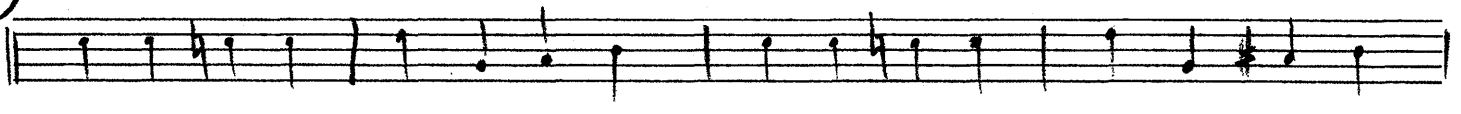
Handwritten musical notation for section L, first staff. The staff contains a sequence of notes, including a half note, followed by several quarter notes, and ending with a quarter note and a double bar line.

Handwritten musical notation for section L, second staff. The staff contains a sequence of notes, including a half note, followed by several quarter notes, and ending with a quarter note and a double bar line.

M

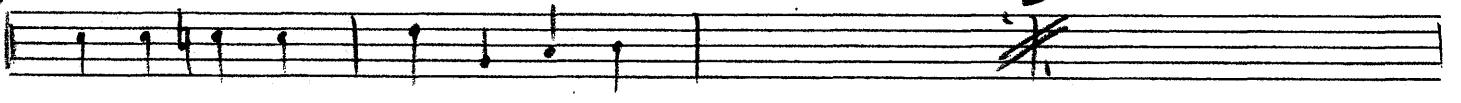


N

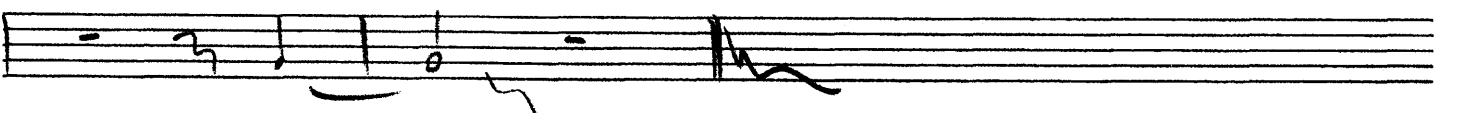
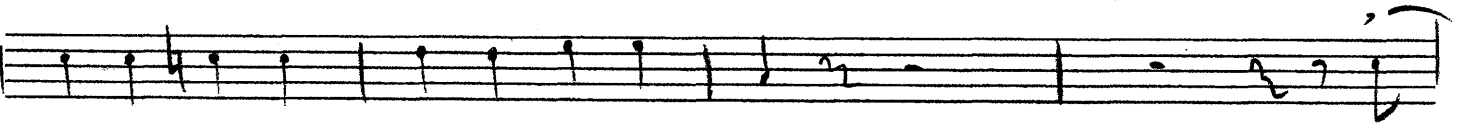
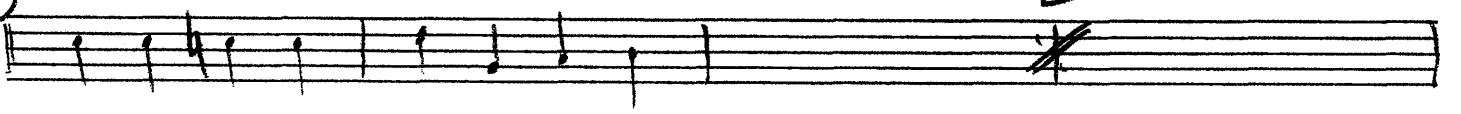


O

P_{no} 2^b



P



NASTY MAGNUS

"Killer Joe" March Tempo

~~BRUSHES~~ ~~LO~~

(A) Add Bass

12 BARS

Q. Jones

(B) (PNO Solo)

Play 12 P BARS

(C) TRS Solo (muted)

PLAY 12

(D) (SXS) mp

(E)

(F)

(G)

(H) Tenor (I) Add Trubs.

(J1) 8x (J2) 6x (J3)

(K) (L)

(M)

(N)

(O) Bas With heavy off-beat

(P) similar

NASTY MAGNUS

Handwritten musical score for "NASTY MAGNUS". The score is written on ten staves. The first staff is for "Alto 1" and "Q. Jones", with a circled "A" and "BS." above it, and a "4" above the first measure and a "12" above the last measure. The second staff is for "PNO" and "Tpt.", with a circled "B" and "PNO" above it, a "12" above the first measure, a circled "C" and "Tpt." above it, an "11" above the second measure, and "UNIS." above the last measure. The third, fourth, and fifth staves contain complex melodic lines with triplets and slurs. The sixth and seventh staves continue the melodic lines with accents and slurs. The eighth staff has a circled "E" and "G" above it. The ninth and tenth staves are for a brass instrument, with a circled "H" above the first measure, a "10" above the last measure, and "fff" below the first measure.

I 12
Alto 1, pg. 2

J1 8x's J2 6x's

J3 SOLA

K

3 3 3 3 2

L

2

ALSO I

(M)

(N)

(O)

(P)

NASTY MAGNUS

7/4 ♩ 4 (A) B_5 12
Alto 2 Q. Jones

(B) PND. 12 (C) TRP. 11 UNIS.

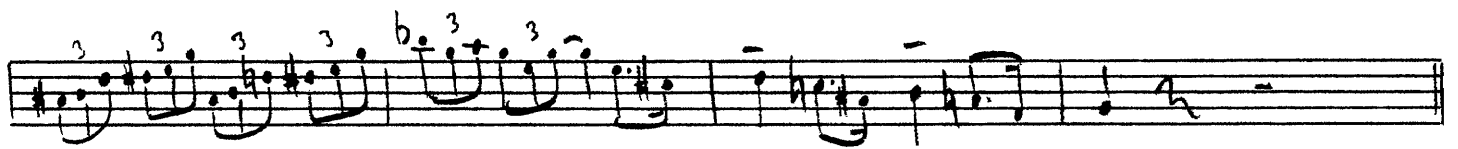
(D) F



Handwritten musical notation for staff (D) F, featuring triplet and sixteenth note patterns.



Handwritten musical notation for the second staff of section (D) F, continuing the triplet and sixteenth note patterns.



Handwritten musical notation for the third staff of section (D) F, continuing the triplet and sixteenth note patterns.

(E) (G)

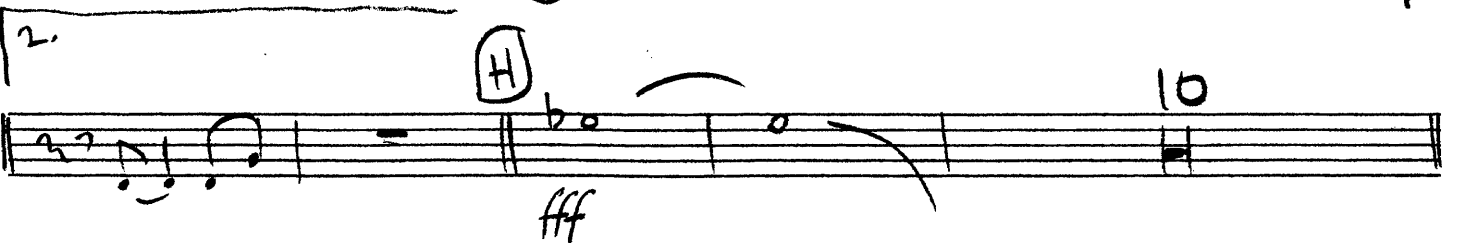


Handwritten musical notation for staff (E) (G), featuring accented notes.



Handwritten musical notation for the first ending of section (E) (G), marked with a first ending bracket.

2. (H) 10 fff



Handwritten musical notation for the second ending of section (E) (G), marked with a second ending bracket, fortissimo (fff) dynamic, and a measure rest of 10.

I 12

J1 8x's J2 6x's

J3

K

L

ALTO II

(M)

Handwritten musical notation for staff M, first line. It begins with a treble clef and a 7/8 time signature. The notes are: G4, A4, B4, C5, B4, A4, G4, F4, E4, D4, C4. There are various accidentals: a sharp on G4, a flat on A4, a sharp on B4, a flat on C5, a sharp on B4, a flat on A4, a sharp on G4, a flat on F4, a sharp on E4, and a flat on D4. Dynamics include *p* at the start, *cresc* with a hairpin, and *f* at the end. A fermata is placed over the final note.

Handwritten musical notation for staff M, second line. It continues from the first line with notes: G4, A4, B4, C5, B4, A4, G4, F4, E4, D4, C4. Dynamics include *p* and *cresc*. A fermata is placed over the final note. A '2' is written above the staff.

(N)

Handwritten musical notation for staff N, first line. It begins with a treble clef and a 7/8 time signature. The notes are: G4, A4, B4, C5, B4, A4, G4, F4, E4, D4, C4. There are various accidentals: a sharp on G4, a flat on A4, a sharp on B4, a flat on C5, a sharp on B4, a flat on A4, a sharp on G4, a flat on F4, a sharp on E4, and a flat on D4. Dynamics include *p* and *cresc*. A fermata is placed over the final note.

Handwritten musical notation for staff N, second line. It continues from the first line with notes: G4, A4, B4, C5, B4, A4, G4, F4, E4, D4, C4. Dynamics include *p* and *cresc*. A fermata is placed over the final note.

(O)

Handwritten musical notation for staff O, first line. It begins with a treble clef and a 7/8 time signature. The notes are: G4, A4, B4, C5, B4, A4, G4, F4, E4, D4, C4. There are various accidentals: a sharp on G4, a flat on A4, a sharp on B4, a flat on C5, a sharp on B4, a flat on A4, a sharp on G4, a flat on F4, a sharp on E4, and a flat on D4. Dynamics include *p* and *cresc*. A fermata is placed over the final note. Triplet markings (3) are present over some notes.

Handwritten musical notation for staff O, second line. It continues from the first line with notes: G4, A4, B4, C5, B4, A4, G4, F4, E4, D4, C4. There are various accidentals: a sharp on G4, a flat on A4, a sharp on B4, a flat on C5, a sharp on B4, a flat on A4, a sharp on G4, a flat on F4, a sharp on E4, and a flat on D4. Dynamics include *p* and *cresc*. A fermata is placed over the final note. Triplet markings (3) are present over some notes.

(P)

Handwritten musical notation for staff P, first line. It begins with a treble clef and a 7/8 time signature. The notes are: G4, A4, B4, C5, B4, A4, G4, F4, E4, D4, C4. There are various accidentals: a sharp on G4, a flat on A4, a sharp on B4, a flat on C5, a sharp on B4, a flat on A4, a sharp on G4, a flat on F4, a sharp on E4, and a flat on D4. Dynamics include *p* and *cresc*. A fermata is placed over the final note. Triplet markings (3) are present over some notes.

Handwritten musical notation for staff P, second line. It continues from the first line with notes: G4, A4, B4, C5, B4, A4, G4, F4, E4, D4, C4. Dynamics include *p* and *cresc*. A fermata is placed over the final note. Triplet markings (3) are present over some notes. The word *soul* is written above the staff.

Handwritten musical notation for staff P, third line. It continues from the second line with notes: G4, A4, B4, C5, B4, A4, G4, F4, E4, D4, C4. Dynamics include *p* and *cresc*. A fermata is placed over the final note. Triplet markings (3) are present over some notes. The word *unis* is written above the staff.

Handwritten musical notation for staff P, fourth line. It continues from the third line with notes: G4, A4, B4, C5, B4, A4, G4, F4, E4, D4, C4. Dynamics include *p* and *cresc*. A fermata is placed over the final note. Triplet markings (3) are present over some notes.

NASTY MAGNUS

A! **4** **(A)** **B♭** **12**

Denon 1 Q. Jones

(B) **PNO.** **12** **(C)** **Tpt.** **11** **UNIS.**

(D) **(F)**

(E) **(G)**

1. **(b)** **(a)** **(2)** **(1)** **SOLO G7(#9)**

(H) **C7** **F6** **F#7** **C6** **C7**

F6 F#b7 C6 E7 A7

Dm7 G7 C Am7 Dm7 G7

I BK6DS!
C7 F6 F#b7 C6 C7

F9 C6 Em7 A7

Dm7 G7 C6 Am7 Gm7 C9+5

J1 8x's F6 F#b7 C6 C7 J2 6x's F6 F#b7 C6 C7

J3 F6

K Legato

L

Handwritten musical notation for section L, consisting of three staves. The first staff has a treble clef and a 7/8 time signature. It contains a melodic line with various accidentals and slurs. The second staff continues the melody with similar notation. The third staff shows a bass clef with a few notes and a fermata.

M

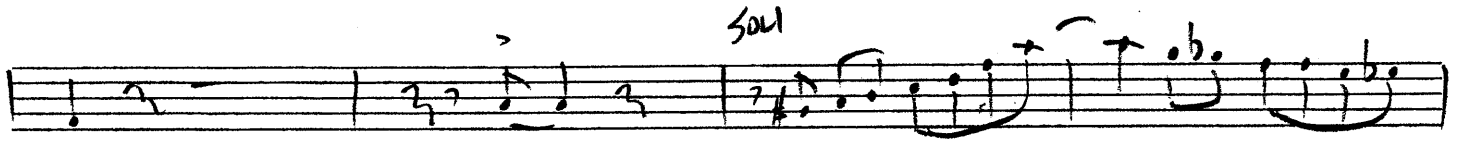
Handwritten musical notation for section M, consisting of two staves. The first staff has a treble clef and a 7/8 time signature. It features a melodic line with many accidentals and slurs. Below the staff, the word "Cresc" is written with a wedge-shaped dynamic marking. The second staff continues the melody and ends with a fermata.

N

Handwritten musical notation for section N, consisting of two staves. The first staff has a treble clef and a 7/8 time signature. It contains a melodic line with various accidentals and slurs. The second staff continues the melody with similar notation and ends with a fermata.

O

Handwritten musical notation for section O, consisting of two staves. The first staff has a treble clef and a 7/8 time signature. It features a melodic line with triplets and various accidentals. The second staff continues the melody with similar notation, including triplets and accidentals.



NASTY MAGNUS

4 (A) BS. 12
Tenor 2 Q. Jones

(B) PND. 12 (C) TPT. 11

(D) (F) SLUR

(E) (G)

1. 2.

(H) 10
fff

I

12



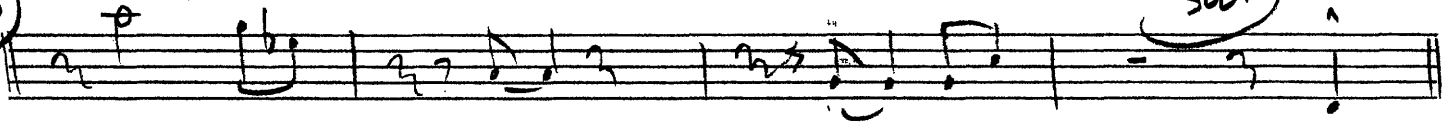
J1 8x's

J2 6x's

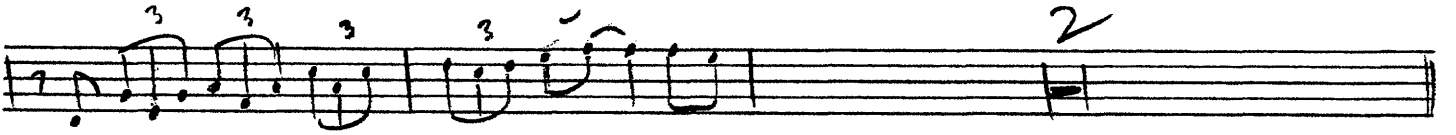
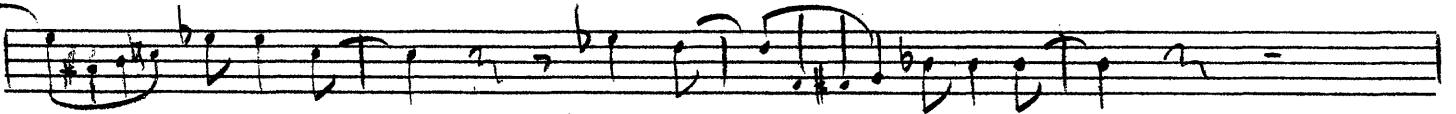
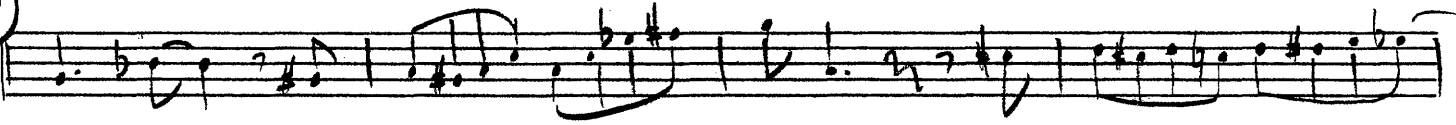


J3

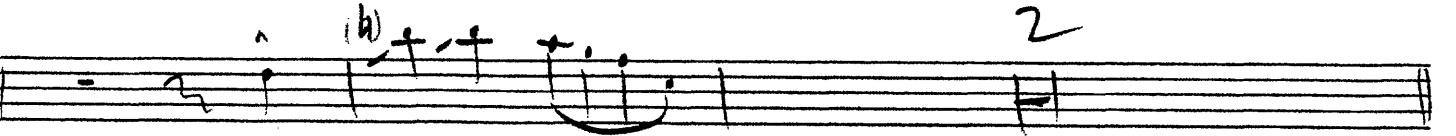
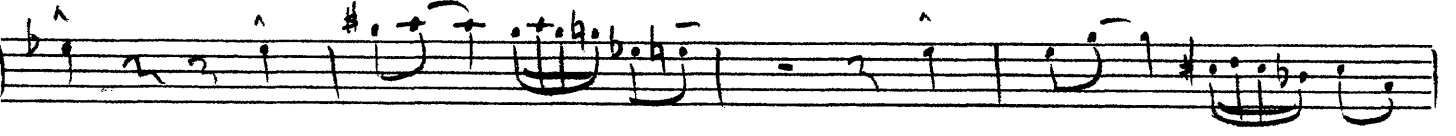
SOLI



K



L



M

Handwritten musical notation on a single staff. It begins with a treble clef and a 7/8 time signature. The melody consists of eighth and quarter notes with various accidentals (sharps, flats, naturals). Below the staff, the dynamic marking 'P' is written, followed by 'Cresc' with a hairpin symbol, and 'f' with a hairpin symbol.

Handwritten musical notation on a single staff, continuing the melody from the first line. It includes a fermata over the final note. Below the staff, the dynamic marking 'P' is written, followed by 'Cresc' with a hairpin symbol.

N

Handwritten musical notation on a single staff. It begins with a treble clef and a 7/8 time signature. The melody features eighth and quarter notes with various accidentals. Below the staff, the dynamic marking 'P' is written, followed by 'Cresc' with a hairpin symbol.

Handwritten musical notation on a single staff, continuing the melody from the first line. It includes a fermata over the final note.

O

Handwritten musical notation on a single staff. It begins with a treble clef and a 7/8 time signature. The melody features eighth and quarter notes with various accidentals and triplets. Below the staff, the dynamic marking 'P' is written, followed by 'Cresc' with a hairpin symbol.

Handwritten musical notation on a single staff, continuing the melody from the first line. It includes a fermata over the final note.

P

Handwritten musical notation on a single staff. It begins with a treble clef and a 7/8 time signature. The melody features eighth and quarter notes with various accidentals and triplets. Below the staff, the dynamic marking 'P' is written, followed by 'Cresc' with a hairpin symbol.

Handwritten musical notation on a single staff, continuing the melody from the first line. It includes a fermata over the final note.

mus.

Handwritten musical notation on a single staff, continuing the melody from the second line. It includes a fermata over the final note.

Handwritten musical notation on a single staff, continuing the melody from the third line. It includes a fermata over the final note.

NASTY MAGNUS

P! **4** **(A)** **Bs.** **12**
Bari **Q. Jones**

Handwritten musical notation for the Bari part, labeled (A). It features a treble clef, a key signature of one sharp (F#), and a 4/4 time signature. The notation includes a whole note chord, a half note chord, and a whole note chord. The name "Q. Jones" is written below the staff.

(B) **NO** **12** **(C)** **Tpt.** **12**

Handwritten musical notation for parts (B) and (C). Part (B) is labeled "NO" and part (C) is labeled "Tpt.". Both parts consist of a single whole note chord on a staff.

(D) **3** **3** **3**

Handwritten musical notation for part (D), consisting of three measures of music. Each measure contains a triplet of eighth notes. The first two measures have a dynamic marking of $>$.

(E)

Handwritten musical notation for part (E), consisting of two measures of music. Each measure contains a sequence of eighth notes: G4, A4, B4, C5, B4, A4, G4.

(E)

Handwritten musical notation for part (E), consisting of two measures of music. Each measure contains a sequence of eighth notes: G4, A4, B4, C5, B4, A4, G4. The first measure has a dynamic marking of $>$.

(F) **3** **3** **3** **3** **b** **3** **3**

Handwritten musical notation for part (F), consisting of two measures of music. Each measure contains a sequence of eighth notes: G4, A4, B4, C5, B4, A4, G4. The first measure has a dynamic marking of $>$.

(F) **3** **3** **3** **3** **b** **3** **3**

Handwritten musical notation for part (F), consisting of two measures of music. Each measure contains a sequence of eighth notes: G4, A4, B4, C5, B4, A4, G4. The first measure has a dynamic marking of $>$.

(F) **3** **3** **3** **3** **b** **3** **3**

Handwritten musical notation for part (F), consisting of two measures of music. Each measure contains a sequence of eighth notes: G4, A4, B4, C5, B4, A4, G4. The first measure has a dynamic marking of $>$.

G

Handwritten musical notation for section G, consisting of two staves. The first staff contains a sequence of notes with some accidentals and rests. The second staff continues the melody with various note values and rests.

H

ff

9

Handwritten musical notation for section H, consisting of two staves. The first staff has a long note with a fermata and a dynamic marking "ff". The second staff continues with notes and rests, with a "9" written above it.

I

1

4

Handwritten musical notation for section I, consisting of two staves. The first staff has notes with a "1" above. The second staff continues with notes and rests, with a "4" above.

J1

8x's

J2

6x's

Handwritten musical notation for section J1, consisting of two staves. The first staff has notes with a circled "8x's" above. The second staff has notes with a circled "J2" and "6x's" above.

J3

Handwritten musical notation for section J3, consisting of two staves. The first staff has notes with a circled "J3" above.

K

Handwritten musical notation for section K, consisting of two staves. The first staff has notes with a circled "K" above.

2

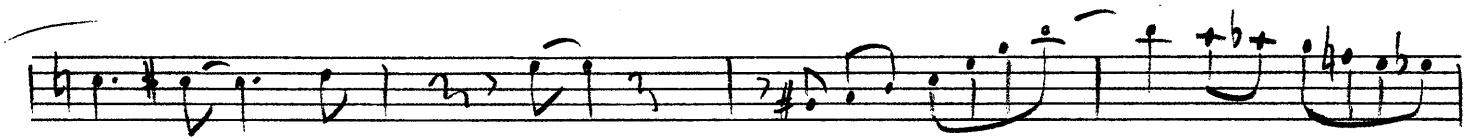
Handwritten musical notation for section K, consisting of two staves. The second staff has a "2" written above it.

L

M

N

O



NASTY MAGNUS

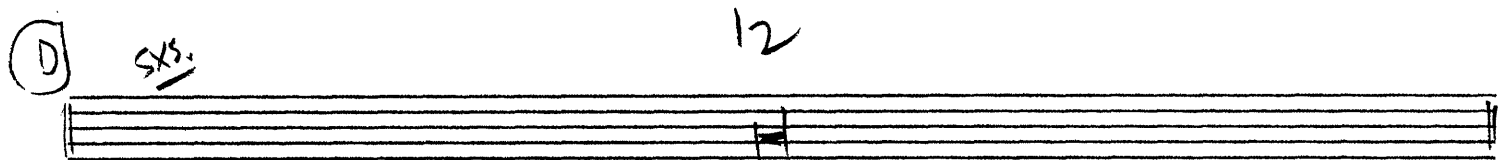
Trumpet 1 4 (A) BS. 12 Q. Jones



(B) RW 12 (C) TR. 12



(D) SXS. 12



(E)



(F) 3 3 4



(G)



(H) $\text{||}\phi$ $\text{||}\phi$ 10

(I) *fff*

(J1) 8x's 2 (J2) 6x's *ff*

(J3)

(K) 7

2 UNIS.

(L) UNIS.

(M) 3 ² ² ² ² 3 ² ² ² ²

(N) 3 ² ² ² ² 3 ² ² ² ²

(O) ² ² ² ² ² ² ² ² ² ²

² ² ² ² ² ² ² ² ² ²

(P) ² ² ² ² ² ² ² ² ² ²

² ² ² ² ² ² ² ² ² ² 4

² ² ² ² ² ² ² ² ² ²

(H) $\frac{11}{16}$ $\frac{11}{16}$ 10

(I) *ff* || b^b \hat{a}

(J1) $8x's$ 2 (J2) $6x's$ *ff*

(J3)

(K) 7

2 UNIS.

(L) UNIS.

TPT. II

(M) 3 3

(N) 3 3

(O)

(P)

NASTY MAGNUS

Handwritten musical score for "NASTY MAGNUS". The score is organized into sections labeled A through F.

Section A: Trumpet 3, BS. (Bass), 12. Includes a circled note and the name "Q. Jones".

Section B: PND (Piano), 11. Includes a circled note and the text "HARMON MUTE".

Section C: Solo C BLUES, C7, F, F#7. Includes a circled note and a "+" sign.

Section D: SYX (Saxophone), 12, OPEN. Includes a circled note.

Section E: Melodic line with various notes and rests.

Section F: 3, 3, 3, 2, 1, 4. Includes a circled note and a tilde symbol (~).

G

H

I

J1 8xs 2 **J2** 6xs

J3

K

L

(M) 3 3

(N) 3 3

(O)

(P)

4

NASTY MAGNUS

1 4 (A) BS. 12
Trumpet 4 H Q. Jones

(B) P.NO. 12 (C) TPL. 12

(D) SAKES 12

(E)

(F) 3 3 3 2 4

(G)

(H) b σ σ σ 10
fff

(I) 11 2

(J1) 8xs 2 (J2) 6xs ff

(J3) ^ ^ ^ ^ ^ ^ ^ ^

(K) 7 ^ ^ ^ ^

2

(L) ms. ^ ^ ^ ^

^ ^ ^ ^

^ ^ 2 ^ ^

M 3 3

N 3 3

O

P